



6 Grange Croft

Easton, Cambridgeshire PE28 0WN



Christie Taylor
Partnered With
Simpsons
Property Experts

This beautifully presented four-bedroom home offers a fantastic opportunity to acquire a family-friendly property tucked away at the end of a private drive in a peaceful hamlet, just a short distance from the A14 – an ideal setting for those who commute regularly.

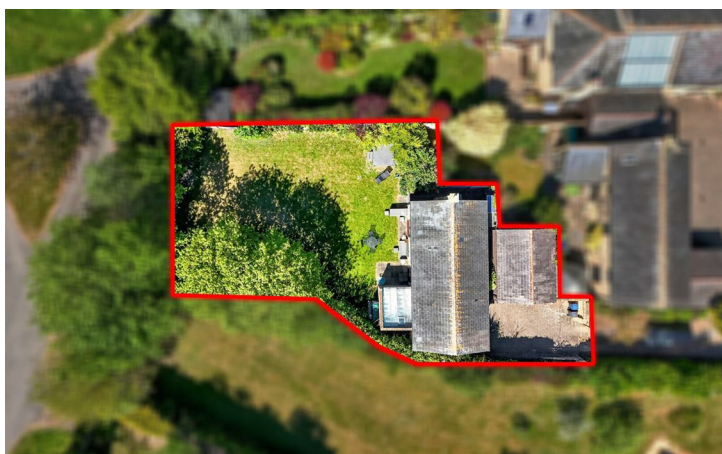
The accommodation begins with a welcoming dining hall entrance that flows seamlessly into the modern kitchen/breakfast room, complete with a central island unit and bench-style seating. A garden room and a dual-aspect lounge featuring a multi-fuel burning stove complete the ground floor, providing versatile and inviting living spaces.

Upstairs, there is a family bathroom and four well-appointed bedrooms, with the principal bedroom benefitting from an en suite shower room and fitted wardrobe storage.

Outside, the rear garden enjoys an excellent degree of privacy, while the front of the property features a double car port and a gated block-paved driveway offering generous parking.



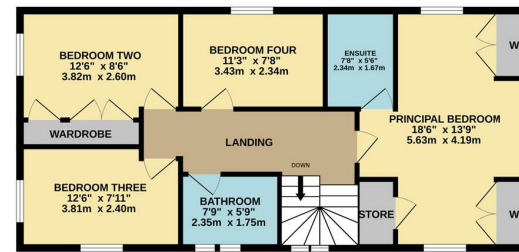
Asking price £675,000



GROUND FLOOR
1086 sq.ft. (100.9 sq.m.) approx.



1ST FLOOR
739 sq.ft. (68.7 sq.m.) approx.

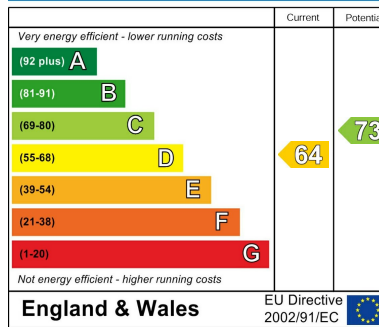


TOTAL FLOOR AREA: 1825 sq.ft. (169.6 sq.m.) approx.

Whilst every attempt has been made to ensure the accuracy of the floor plan contained here, measurements of doors, windows, rooms and any other items are approximate and no responsibility is taken for any error, omission, or mis-statement. The plan is copyright to Simpson and Partners and is for illustrative purposes and should only be used as such by any prospective purchaser. The services, systems and appliances shown have not been tested and no guarantee as to their operability can be given.
Made with Metropix ©2026



Energy Efficiency Rating





Christie Taylor
Partnered With

Simpsons
Property Experts

Tel: 01480 589584

Email: kimbolton@simpsonspropertyexperts.co.uk

Web: simpsonspropertyexperts.co.uk/our-locations/kimbolton

